

# Cirugía e Imagenología 2022-2023

## Catálogo de Productos

Distribuido en Chile por Skill Training Ltda.

Avenida del Valle 932 Of. 205, Ciudad Empresarial, Huechuraba, Santiago. Fono: +56 23 252 6600

## Índice / Cirugía e Imagenología

01 - Fantomas Imagenología	
- CT / MRI	03
- Rayos X	04
02 - Modelos Ecográficos	
- Abdomen	04-05
- Block Models (Select Series)	05-06
- Brazo	06
- Cabeza / Cuello / Torso Superior	07
- Calibración de Equipos	09
- Corazón	09
- Escrotal	09
- Pelvis Femenino y Mamas	09
- Pierna	11
- Riñón	12
- Seno	14
- Tiroides	15
- Tórax	17
- Torso Completo	19
- Torso Inferior	07
- Miscelaneos / Consumibles	14
03 - Simulador Ultrasonido Vimedix	14
04 - Simuladores Quirúrgicos	15
- Cardiología	15
- Endoscopia	16
- Laparoscopia	16
- Neurología	16
- Otros	

01 - Fantomas Imagenología / CT / MRI



**Fantoma Multipropósito de Tórax N1  
"LUNGMAN"**  
Kyoto Kagaku  
Código 2018-0058



**CT Abdomen Phantom**  
Kyoto Kagaku  
Código 2018-0005



**CT-DI Phantom  
(Head and Body Phantom)**  
Kyoto Kagaku  
Código 2018-0050



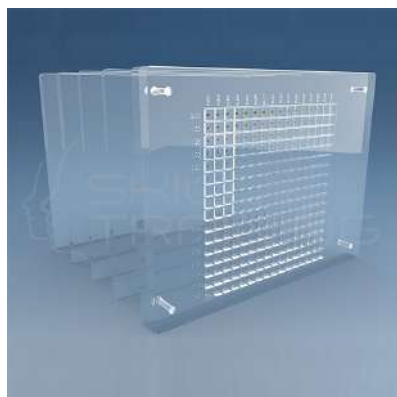
**Digital Mammographic  
Phantom NCCE (fall)**  
Kyoto Kagaku  
Código 2018-0051



**CT QA Phantom JCT II**  
Kyoto Kagaku  
Código 2018-0052



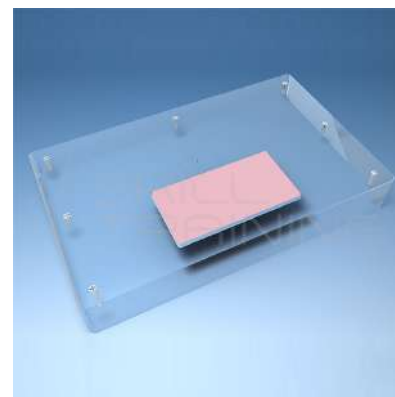
**Acrylic Phantom XAC**  
Kyoto Kagaku  
Código 2018-0053



**Contrast Details Mammography  
Phantom**  
Supertech  
Código 2085-0001



**Mammographic Phototimer  
Consistency Tools, Acrylic**  
Supertech  
Código 2085-0002



**ACR Accreditation Phantom "Digital"  
Full Field Mammography Phantom**  
Supertech  
Código 2085-0003

01 - Fantomas Imagenología / Rayos X



X-Ray Phantom Pelvis, Transparent

**Erlor Zimmer**

Código 2012-0143



Fantoma Cabeza de Rayo X,  
Transparente

**Erlor Zimmer**

Código 2012-0171



X-Ray/Radiographic Positioning Doll

**Adam Rouilly**

Código 2001-0018



Positioning Phantom for X-ray Shots

**Kyoto Kagaku**

Código 2018-0048

02 - Modelos Ecográficos / Abdomen



Abdominal Aortic Aneurysm

Ultrasound Training

**CAE Healthcare**

Código 2009-0020



Paracentesis Ultrasound

Training Model

**CAE Healthcare**

Código 2009-0236



US-5: FAST/Acute Abdomen

Phantom "FAST/ER FAN

**Kyoto Kagaku**

Código 2031-0022





**Ultrasound Examination  
Model "ABDFAN" Set**  
Kyoto Kagaku  
Código 2018-0032



**Ultrasound Examination  
Model "ECHOZY" Set**  
Kyoto Kagaku  
Código 2018-0033



**US-1: Ultrasound Examination  
Model "ECHOZY"**  
Kyoto Kagaku  
Código 2018-0046

**02 - Modelos Ecográficos / Block Models (Select Series)**



**Branched 2 Vessel Ultrasound  
Training Block Model**  
CAE Healthcare  
Código 2009-0019



**Branched 4 Vessel Ultrasound  
Training Block Model**  
CAE Healthcare  
Código 2009-0045



**Regional Anesthesia Ultrasound  
Training Block Model**  
CAE Healthcare  
Código 2009-0128



**Abscess Drainage Ultrasound  
Training Model**  
CAE Healthcare  
Código 2009-0156



**Bone Fracture Ultrasound Training  
Block Model**  
CAE Healthcare  
Código 2009-0157



**Foreign Body Identification  
Ultrasound Training**  
CAE Healthcare  
Código 2009-0160



**Pediatric 4 Vessel Ultrasound  
Training Block Model**  
CAE Healthcare  
Código 2009-0161



**Soft Tissue Biopsy Ultrasound  
Training Block Model**  
CAE Healthcare  
Código 2009-0163



**Bone Fracture Ultrasound Training  
Block Model**  
CAE Healthcare  
Código 2009-0166

**02 - Modelos Ecográficos / Brazo**



**Peripheral Doppler Ultrasound  
Training Model**  
CAE Healthcare  
Código 2009-0026



**IV and Arterial Line Vascular Access  
Ultrasound Model**  
CAE Healthcare  
Código 2009-0158



**2nd Gen PICC, IV & Arterial  
Ultrasound Model**  
CAE Healthcare  
Código 2009-0211



**Ultrasound-Guided PICC  
Training Simulator**  
Kyoto Kagaku  
Código 2018-0039

02 - Modelos Ecográficos / Cabeza / Cuello / Torso Superior



**CVC Insertion Simulator II**

**Kyoto Kagaku**

Código 2018-0002



**Ultrasound Neonatal Head Phantom**

**Kyoto Kagaku**

Código 2018-0030



**Ultrasound Neonatal Head Phantom (Abnormal)**

**Kyoto Kagaku**

Código 2018-0031



**Internal Jugular Central Line  
Ultrasound Maniquin**

**CAE Healthcare**

Código 2009-0040



**Gen II Ultrasound Central Line  
Model Transparent**

**CAE Healthcare**

Código 2009-0041



**Gen II - Automated Pump Ultra-  
sound Central Line**

**CAE Healthcare**

Código 2009-0164



**Gen II - Hand Pump Ultrasound  
Central Line**

**CAE Healthcare**

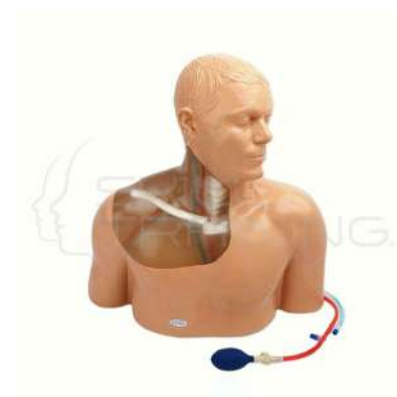
Código 2009-0165



**Gen II - Automated Pump Regional  
Anesthesia Ultrasound Line**

**CAE Healthcare**

Código 2009-0169



**Gen II - Hand Pump Regional  
Anesthesia Ultrasound Central Line**

**CAE Healthcare**

Código 2009-0170



**Transparent Internal Jugular  
Central Line**

CAE Healthcare

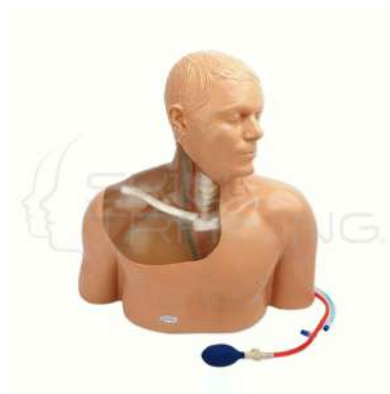
Código 2009-0171



**Gen II - Automated Pump  
Transparent Ultrasound**

CAE Healthcare

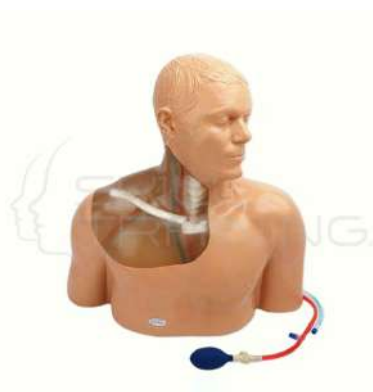
Código 2009-0172



**Gen II Ultrasound Central Line  
Model with Transparent Insert**

CAE Healthcare

Código 2009-0173



**Internal Jugular Central Line  
Ultrasound Maniquin**

CAE Healthcare

Código 2009-0174



**Gen II Ultrasound Central Line  
Model Transparent**

CAE Healthcare

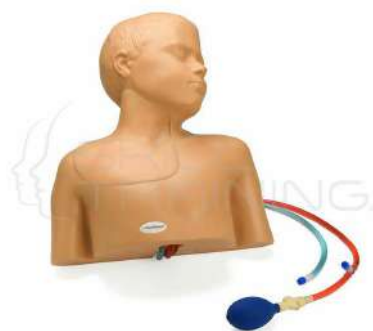
Código 2009-0175



**Gen II - Automated Pump Ultra-  
sound Central Line**

CAE Healthcare

Código 2009-0198



**Pediatric Regional Anesthesia and  
Central Line**

CAE Healthcare

Código 2009-0242



**Blue Phantom COVID 19 Ultrasound  
Lung Simulator**

CAE Healthcare

Código 2009-0253



02 - Modelos Ecográficos / Calibración de Equipos / Corazón / Escrotal



**N-365 Multipurpose QA Phantom**

**Kyoto Kagaku**

Código 2018-0026



**Cardiac Ultrasound Training Model**

**CAE Healthcare**

Código 2009-0254



**Scrotal Ultrasound Training Model**

**CAE Healthcare**

Código 2009-0197

02 - Modelos Ecográficos / Pelvis Femenino y Mamas



**Fetus Ultrasound Phantom**

**"Spacefan ST"**

**Kyoto Kagaku**

Código 2018-0004



**Breast Ultrasound Examination Phantom**

**Kyoto Kagaku**

Código 2018-0034



**Ultrasound-Guided Breast Biopsy Phantom DUAL**

**Kyoto Kagaku**

Código 2018-0036



**Amniocentesis Ultrasound Training Model**

**CAE Healthcare**

Código 2009-0021



**Ectopic Pregnancy Transvaginal Ultrasound Training**

**CAE Healthcare**

Código 2009-0027



**General Pathology Transvaginal Ultrasound Training**

**CAE Healthcare**

Código 2009-0028



**Intrauterine Pregnancy  
Transvaginal Ultrasound**

CAE Healthcare

Código 2009-0029



**Combo Intrauterine and Ectopic  
Pregnancy Transvaginal Ultrasound**

CAE Healthcare

Código 2009-0030



**Transvaginal SonoHysterography  
and Sonosalpingography Ultrasound**

CAE Healthcare

Código 2009-0031



**Percutaneous Umbilical Cord Blood  
Sampling (PUBS) Ultrasound**

CAE Healthcare

Código 2009-0032



**Femoral Regional Anesthesia &  
Vascular Access**

CAE Healthcare

Código 2009-0035



**Elastography Ultrasound Breast  
Phantom Includ**

CAE Healthcare

Código 2009-0167



**Breast Biopsy Ultrasound Phantom**

CAE Healthcare

Código 2009-0168

02 - Modelos Ecográficos / Pierna



**Leg with Foreign Body Identification Insert**  
CAE Healthcare  
Código 2009-0042



**Advanced Sclerotherapy Ultrasound**  
CAE Healthcare  
Código 2009-0044



**Leg Femoral and Saphenous Vein Venous Access**  
CAE Healthcare  
Código 2009-0046



**Leg Femoral and Saphenous Vein Venous Access**  
CAE Healthcare  
Código 2009-0047



**Gen II Femoral Vascular Access and Regional Anesthesia Ultrasound**  
CAE Healthcare  
Código 2009-0182



**Sciatic Nerve Regional Anesthesia Ultrasound**  
CAE Healthcare  
Código 2009-0194



**Blue Phantom Musculoskeletal (MSK) Ultrasound**  
CAE Healthcare  
Código 2009-0215

02 - Modelos Ecográficos / Riñón / Senos / Tiroides



**Renal Biopsy Ultrasound  
Training Model**  
CAE Healthcare  
Código 2009-0191



**Thyroid Biopsy Ultrasound  
Training Model**  
CAE Healthcare  
Código 2009-0162

02 - Modelos Ecográficos / Tórax



**Chest Tube and Ultrasound Guided  
Thoracentesis**  
CAE Healthcare  
Código 2009-0206



**Midscapular Thoracentesis  
Ultrasound Training**  
CAE Healthcare  
Código 2009-0208



**Ultrasound Guided Thoracentesis  
Simulator**  
Kyoto Kagaku  
Código 2018-0042



**Pulmonary Ultrasound Training  
Phantom**  
Kyoto Kagaku  
Código 2018-0044

02 - Modelos Ecográficos / Torso Completo



**Transesophageal and Transthoracic Echo Training Model**  
**CAE Healthcare**  
 Código 2009-0033



**Transthoracic Echocardiography and Pericardio**  
**CAE Healthcare**  
 Código 2009-0034



**Transthoracic Echocardiography and Pericardio**  
**CAE Healthcare**  
 Código 2009-0188



**FAST, TEE and TTE Training Model Includes Full Body Torso**  
**CAE Healthcare**  
 Código 2009-0189



**FAST Ultrasound Training Model Includes Full Body Torso**  
**CAE Healthcare**  
 Código 2009-0190



**US-8: Pediatric FAST/Acute Abdomen Phantom**  
**Kyoto Kagaku**  
 Código 2018-0045

02 - Modelos Ecográficos / Torso Inferior



**TAP Block Ultrasound Training Model for Regional Anesthesia**  
**CAE Healthcare**  
 Código 2009-0205



**Lumbar Puncture and Spinal Epidural**  
**CAE Healthcare**  
 Código 2009-0228



**Infant Hip Sonography Training Phantom**  
**Kyoto Kagaku**  
 Código 2018-0035



02 - Modelos Ecográficos / Miscelaneos / Consumibles



**Blue Ultrasound Liquid Refill  
Solution 235ML**  
CAE Healthcare  
Código 2009-0212



**Red Ultrasound Liquid  
Refill Solution**  
CAE Healthcare  
Código 2009-0213



**Red Ultrasound Liquid Refill  
Solution 1LT**  
CAE Healthcare  
Código 2009-0244

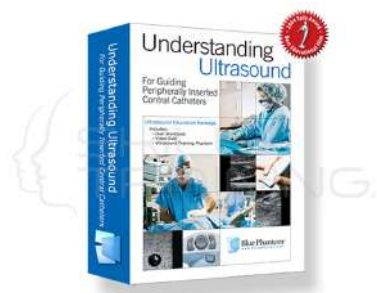


**Blue Ultrasound Liquid Refill  
Solution 1LT**  
CAE Healthcare  
Código 2009-0245



**Transparent Ultrasound  
Filling Liquid**  
CAE Healthcare  
Código 2009-0255

03 - Simulador Ultrasonido Vimedix



**Understanding Ultrasound for  
Guiding Central Catheter Insertions**  
CAE Healthcare  
Código 2009-0257

04 - Simuladores Quirúrgicos / Cardiología



**CathLabVR System**

CAE Healthcare

Código 2009-0146

04 - Simuladores Quirúrgicos / Endoscopia



**CAE EndoVR Interventional Simulator Standar Base**

CAE Healthcare

Código 2009-0136



**ORSIM II Bronchoscopy Simulator**

Airway Simulation

Código 2058-0001



**Colonoscope Training Model**

Kyoto Kagaku

Código 2018-0040

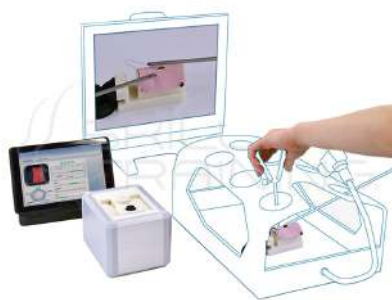


**3D NKS Colonoscope Trainer**

Kyoto Kagaku

Código 2018-0054

04 - Simuladores Quirúrgicos / Laparoscopia



**Simulador con Evaluación de Sutura Laparoscópica "LaparoCube"**

**Kyoto Kagaku**

Código 2018-0059



**Laparoscopic Suture Simulator Assessment System**

**Kyoto Kagaku**

Código 2018-0008



**Simulador Quirúrgico LapVR**

**CAE Healthcare**

Código 2009-0015



**Simulador Laparoscopia**

**Dr ET EndoTrainer**

**Dr ET EndoTrainer**

Código 2060-0001



**Simulador Laparoscópico LS-1100**

**Training Competence**

Código 1076-0002

04 - Simuladores Quirúrgicos / Neurología / Otros



**NeuroVR Simulator**

**CAE Healthcare**

Código 2009-0151



**Surgical Cut Suit (Human Worn Partial Task)**

**CAE Healthcare**

Código 2009-0152



**TCCC/EMS Cut Suit (Human Worn Partial Task Simulator)**

**CAE Healthcare**

Código 2009-0153